



ecoHITCH -Designed Specifically For Your **Green Vehicle**

Installation Instructions

Application Fits

2012 + Toyota Prius C

X7194 & X7195

2" & 1.25" EcoHitch Stealth

200 lbs. Tongue Weight/ 2,000 lbs. Towing Weight

Torklift Central
315 Central Ave N
Kent, WA 98032
253-854-1832

www.torkliftcentral.com
support@tlcentral.com

Stay Connected



torkliftcentral



torkliftcentral



tlcentral



torklift central



torklift central



Bolt Kit Weight: 312g +/-

Hardware Included

| QTY | Fastener |
|-----|-----------------------|
| 6 | 3/8" Flat Washer |
| 4 | 3/8" Fender Washer |
| 4 | 3/8" Nylon Lock Nut |
| 2 | 3/8"-16 x 1-1/2" bolt |
| 2 | 3/8"-16 X 5" Bolt |

READ THESE INSTRUCTIONS THOROUGHLY AND ACCOUNT FOR ALL HARDWARE LISTED BEFORE BEGINNING INSTALLATION!

Step 1. Raise rear of vehicle and place on ramps or suitable jack stands.

Step 2. Remove the black plastic undercarriage cover. There are (7) plastic clips that need to be removed to allow the plastic cover to be removed. See Figure [1].

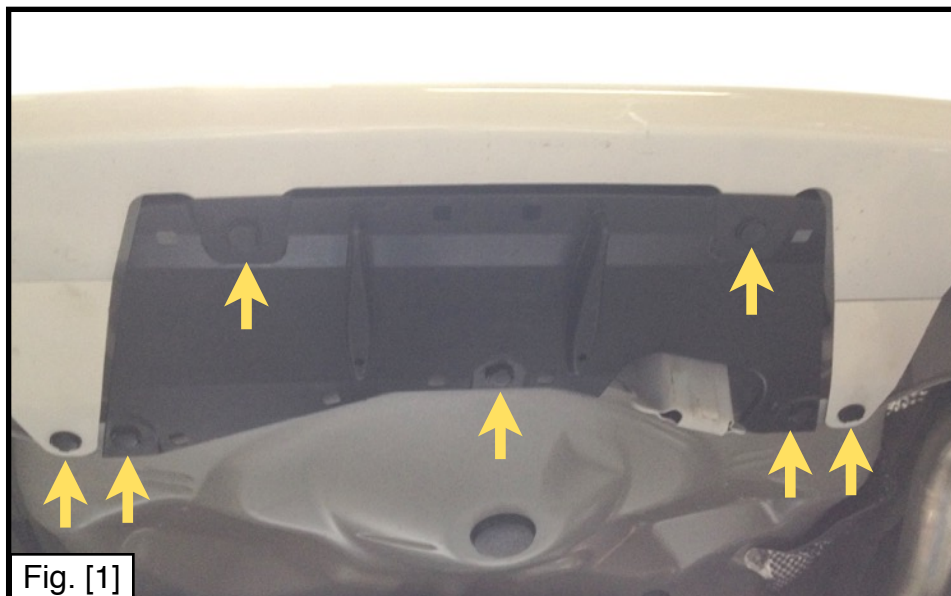


Fig. [1]

Step 3. Disconnect the rubber exhaust bung from the factory hanger using a lubricant such as WD-40. See Figure [2].

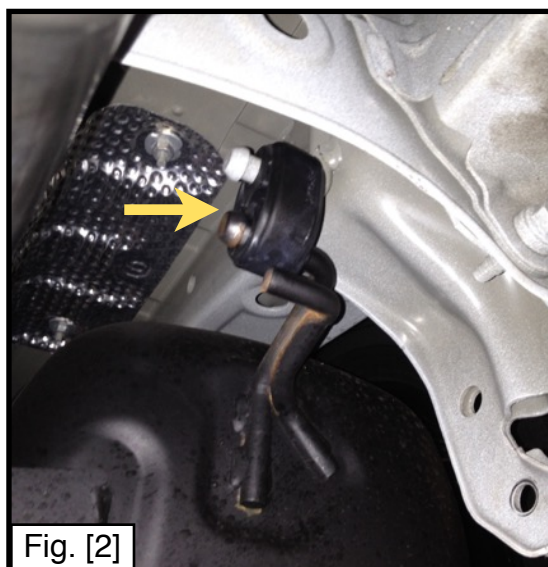
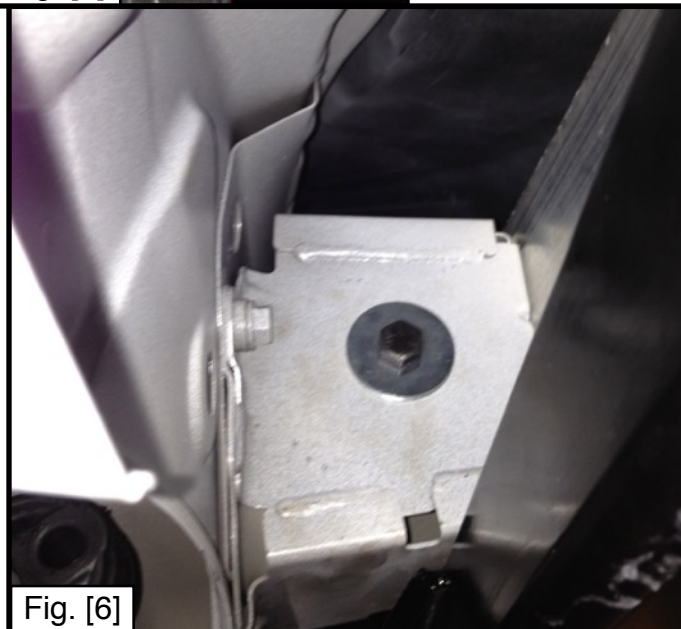
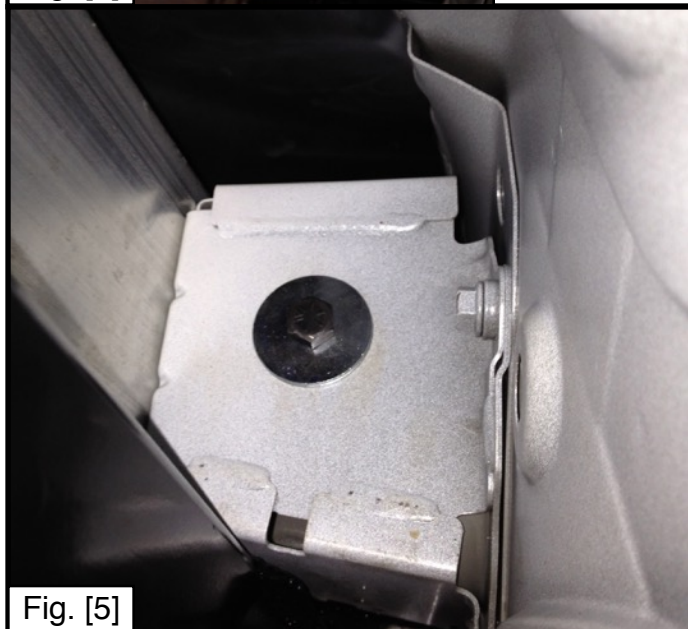
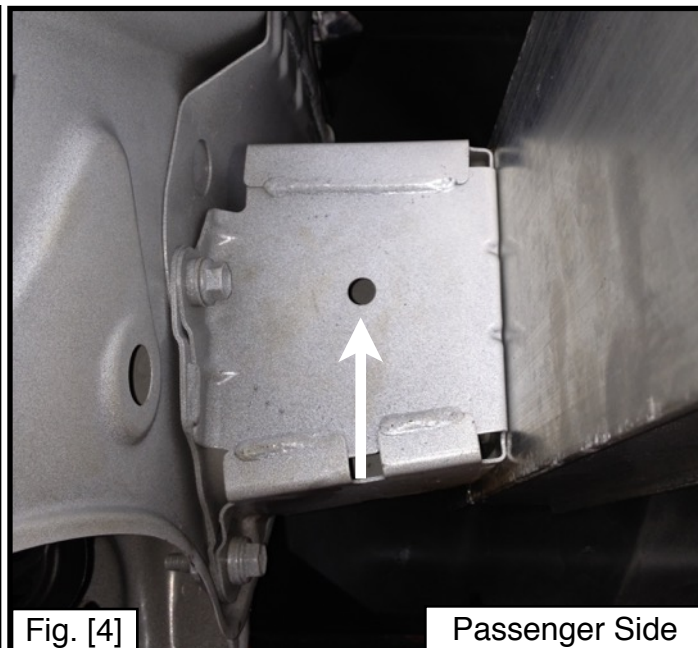
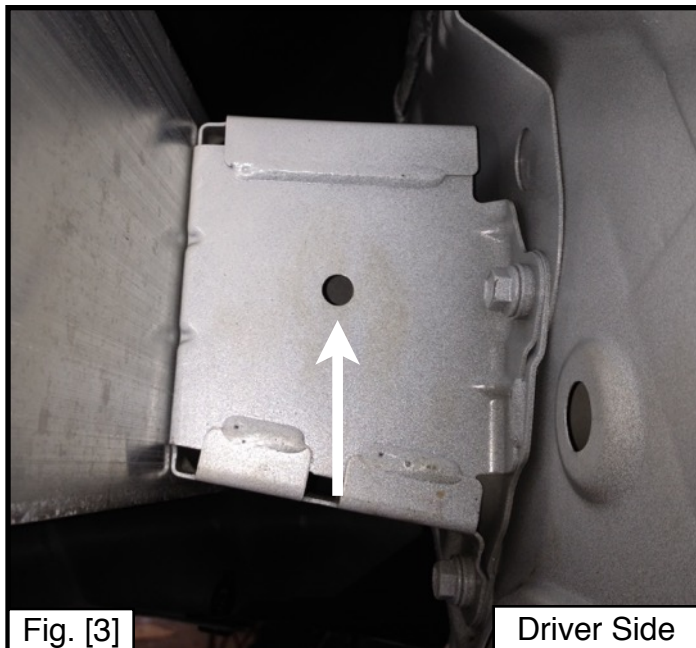


Fig. [2]

Step 4. Raise hitch into position by lining up the holes in the hitch frame plates and the holes in the impact bar. Lower the exhaust to allow the hitch to fit into position. Once hitch is in position, take (1) 3/8"-16x5" bolt, (2) 3/8" fender washers, and push through the impact bar from the inside of the impact bar towards the outside of the vehicle. Repeat on passenger side. See Figure [3]-[6].



Step 5. Secure each bolt with (1) 3/8" flat washer, and (1) 3/8" nylon lock nut and hand tighten. Do not torque at this time. Repeat on passenger side.

Step 6. Take (1) 3/8"-16x1-1/2" bolt, and place it through the factory tow hook from the outside and through the hitch plate. Secure with (2) 3/8" flat washers, and (1) 3/8" nylon lock nut. Do not torque at this time. Repeat process on passengers side.

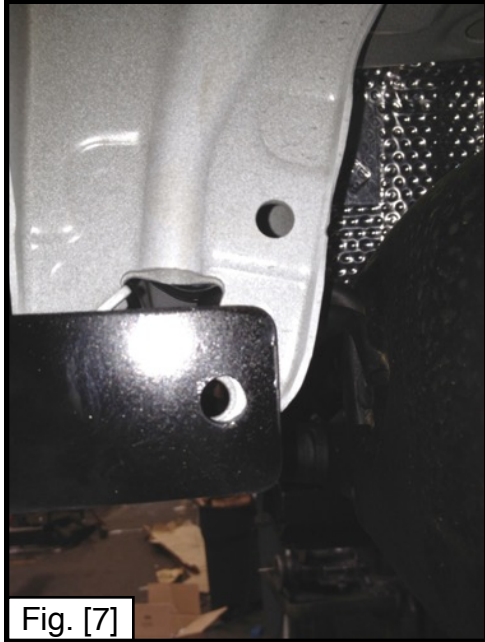


Fig. [7]



Fig. [8]

Step 7. Torque the (2) lower 3/8"-16x1-1/2" bolts to 25ft-lbs. Torque the top (2) 3/8"-16x5" bolts with nylon lock nuts until the lock nut makes firm contact with the bumper brace. Once the nut and bolt are firm, tighten nut an additional two turns.

!!!!DO NOT OVER-TIGHTEN THE UPPER TWO BOLTS. OVER-TIGHTENING THE BOLTS WILL CAUSE THE BUMPER BRACE TO BEGIN TO CRUSH DUE TO EXCESSIVE PRESSURE!!!

This will cause non-warranty damage to bumper brace.

Step 8. Take bumper tabs and place back into place under hitch cross-tube. Take two of the bumper clips removed from Step 2 and place the bumper tabs back into position. Insert clips.



Fig. [9]

Congratulations on the completed installation of the Toyota Prius C EcoHitch!
It is designed with a lifetime warranty for a lifetime of enjoyment. If you have any questions or suggestions please contact our tech support at support@tlcentral.com or by phone at (253)-854-1832.



WARRANTY/DISCLAIMER INFORMATION

Torklift Central requires proof of purchase for warranty claim registration, with pictures of any defective product before issuing a replacement. Torklift will not accept claims on any product without proof of purchase, which can be faxed, scanned, emailed or mailed to the information provided below. Torklift Central warrants its hitches, custom hitch receivers and accessories (excluding electrical wire harnesses which carry a warranty from their specified manufacturer) from date of purchase against defects in material and workmanship under normal use and service for the ownership life of the original consumer purchaser. Torklift Central will replace free of charge any part that proves defective in material or workmanship when presented to Torklift Central, transportation charges prepaid by purchaser, at the address below. **This warranty is limited to defective parts replacement only. Labor charges and/or damage incurred in installation or replacement, as well as incidental and consequential damages connected therewith are excluded.** This warranty does not include normal wear and tear or the finish and paint. Rusting, cracking or peeling of the finish is also excluded. Some states do not allow the exclusion or limitation of incidental or consequential damages, so the above limitation or exclusion may not apply to you. Any damage to Torklift Central products as a result of misuse, abuse, neglect, accident, improper installation or any use violative of instructions furnished by Torklift Central will void the warranty. This warranty gives you specific legal rights and you may also have rights, which vary from state to state. With warranty service, you may be able to go to a small claims court, a state court or a federal district court.

Although Torklift Central trailer hitches are both tested and rated for towing within the specific capacity label found on each trailer hitch. Torklift Central assumes no liability for vehicle manufacturers warranty due to the use of a Torklift Central trailer hitch being used for towing behind any vehicle or using the trailer hitch in a manner that it was not designed for. Although this specific trailer hitch has a load rating, which includes trailer tongue weight, and a trailer weight carrying capacity, Torklift Central is not responsible for the voiding of any warranty on any vehicle due to factory towing limitations. All vehicle warranties are the sole property and responsibility of the owner of the vehicle that the Torklift Central trailer hitch is installed upon. Torklift Central does not endorse towing behind any vehicle if the vehicles manufacturer states that towing is not recommended. Check your vehicle's owner's manual for the proper tow rating of your vehicle.

ADDRESS: 315 Central Ave N. Kent, WA 98032

WARNING Your vehicle may have a lower tow rating than this trailer hitch. If your vehicle's tow rating is less than the rated towing capacity on your Torklift Central trailer hitch, your trailer hitch capacity is limited to your vehicle's factory rated towing capacity.

FOR EXAMPLE: the label on your Torklift Central trailer hitch states it's capacity is rated for 500 pounds tongue weight and 5,000 pounds towing weight. However your vehicle's factory rated towing capacity is limited to only 350 pounds tongue weight and 3,500 pounds towing weight. In this example your maximum towing capacity of your Torklift Central trailer hitch is limited to 350 pounds tongue weight and 3,500 pounds towing weight as stated by your vehicle's maximum factory tow rating.

DANGER Never exceed your vehicle's manufacturer's recommended towing capacity which may be a lower rating than this trailer hitch

Unsure of your tow rating? Download our towing app from the app store to find your vehicles tow rating.

www.torkliftcentral.com/app.php